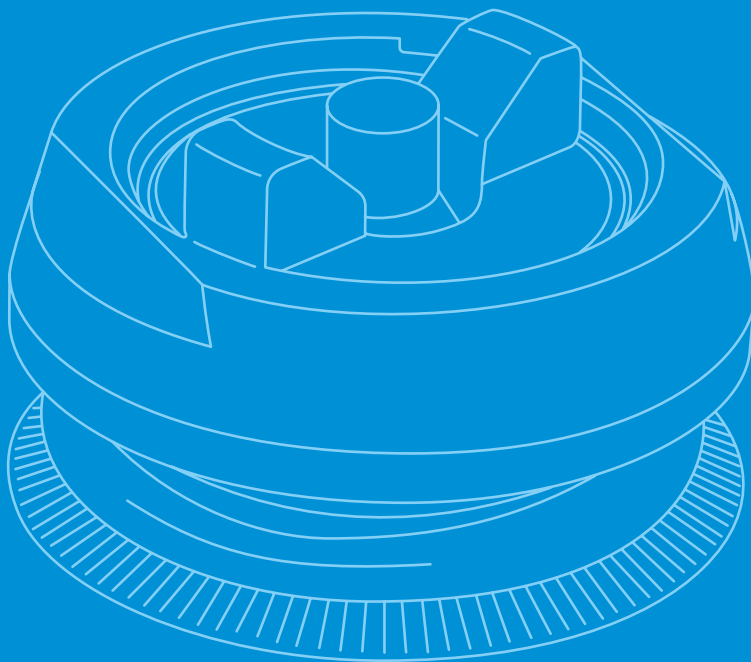


# Valves



# Prosthetic Valves

Name	Use	Diameter	Height	Housing Material	Body Material	Push/Pull	Product Number
Red Dot Total Contact Valve	Lamination	32 mm	22 mm	Al	Al	Push	<b>51936</b>
Plastic and Aluminum Screw-In Suction Valve	Lamination	32 mm	11 mm	Al	ABS	Pull	<b>51971</b>
Leak-Rate Total Contact Valve	Lamination	32 mm	13 mm	Al	Al	Leak Rate	<b>51982</b>
Sierra Screw-In Suction Valve	Lamination	35 mm	9.5 mm	Al	Al	Pull	<b>52351</b>
SFS Adjustable Leak Rate Valve	Thermoplastic	38 mm	18 mm	Delrin	Delrin	Push	<b>807479</b>
SFS Adjustable Leak Rate with Adhesive Valve	Thermoplastic	38 mm	18 mm	Delrin	Delrin	Push	<b>807480</b>
SFS Leak Rate Valve	Thermoplastic	38 mm	18 mm	Delrin	Delrin	Push	<b>807487</b>
SFS Leak Rate w/ Adhesive Valve	Thermoplastic	38 mm	18 mm	Delrin	Delrin	Push	<b>807488</b>
Centri Lamination Valve	Lamination	33 mm	22 mm	SS	Delrin	Push	<b>721000035</b>
CTFV-CSF Valve	Thermoplastic	39 mm	23 mm	SS	Delrin	Push	<b>721000039</b>
Mini Valve	Both	9 mm	12 mm	SS	SS	Auto	<b>721000060</b>
CSS Valve Kit	Lamination	12 mm	8 mm	Al	Al	Auto	<b>721000089</b>

# Red Dot Air Expulsion Valve



## Specifications

**Diameter:** 1.3 in. (32 mm)

**Build height:** 0.9 in. (22 mm)

**Material:** Aluminum body

## Product Features

- Simple push button design, releases suction suspension of the socket

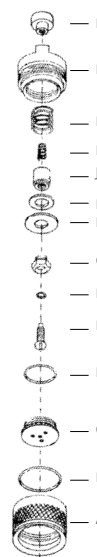


## Ordering Information

Description	Product Number
Red Dot Valve	<b>51936</b>

## Replacement Parts

A	51937 – Body	H	51942 – Flapper
B	51939 – O-Ring	I	51949 – Washer
C	51946 – Seat	J	51940 – Stern
D	59316 – O-Ring	K	51943 – Spring
E	51944 – Plunger	L	51948 – Flapper spring
F	51945 – O-Ring	M	51938 – Insert
G	51950 – Bolt	N	51941 – Button



# Plastic and Aluminum Screw-In Suction Valve



## Specifications

**Head diameter:** 1.3 in. (32 mm)

**Height:** 0.4 in. (11 mm)

**Material:** Aluminum and ABS

## Product Features

- Includes aluminum housing and Delrin insert with neoprene seals
- Housing is  $\frac{7}{16}$  in. long to permit use in walled socket
- Easy to manipulate large valve release button



## Ordering Information

Description	Product Number
Plastic-Aluminum Suction Valve, TCV-300	<b>51971</b>
Plastic-Aluminum Suction Valve, Insert Only, TCV-350	<b>51980</b>

# Leak-Rate Total Contact Valve



## Specifications

**Head diameter:** 1.3 in. (32 mm)

**Height:** 0.5 in. (13 mm)

**Material:** Aluminum

## Product Features

- Permits controlled rate of airflow through valve when amputee stands or walks, allowing noiseless expulsion of air from socket
- Unique nylon ball-check provides one-way air flow adjustable by an external screw
- Once properly adjusted, no further adjustment is required



## Ordering Information

Description	Product Number
Leak-Rate Total Contact Valve, TCV -400L; 1 in. (2.5 cm) Long	51981
Leak-Rate Total Contact Valve, Insert Only, TCV-450L	52001
Leak-Rate Total Contact Valve, TCV-400S; 0.5 in. (1.3 cm) Long	51982
Leak-Rate Total Contact Valve, Insert Only, TCV-450S	52002

# Sierra Screw-In Suction Valve



## Specifications

**Head diameter:** 1.4 in. (35 mm)

**Height:** 0.4 in. (9.5 mm)

**Material:** Aluminum

## Product Features

- Maintains constant negative pressure within socket
- Preset to expel air approximately one pound per square inch pressure
- Thin design, recessed button and flush inner surfaces
- Easy to install or remove



## Ordering Information

Description	Product Number
Sierra Suction Valve, 03-00	52351
Sierra Suction Valve, Insert Only, 03-01	52290

# S.F.S. Valve (Scandinavian Flexible Socket)



## Specifications

**Head diameter:** 1.5 in. (38 mm)

**Height:** 0.7 in. (18 mm)

**Material:** Delrin

## Product Features

- Low profile for improved cosmesis
- Deep undercut vacuum channel with vacuum holes



## Ordering Information

Description	Product Number
Non-Adjustable Leak Rate, with Housing and Adhesive Coating	<b>807488</b>
Non-Adjustable Leak Rate with Housing	<b>807487</b>
Non-Adjustable Leak Rate, Valve Only	<b>807461</b>
Adjustable Leak Rate, with Housing and Adhesive Coating	<b>807480</b>
Adjustable Leak Rate, with Housing	<b>807479</b>
Adjustable Leak Rate, Valve Only	<b>807453</b>
Housing Only	<b>807388</b>

## Accessories

Description	Image	Product Number
Tool Kit and Accessories for S.F.S. Valve		
Velcro Retainer Kit, Includes 3 Each of Items Pictured	A	<b>807412</b>
Trim Tool, for S.F.S. Valve Housing	B	<b>807396</b>
<b>Replacement Parts</b>		
Replacement Blades, 2 Each Per Pack		<b>807398</b>
S.F.S. Valve Tap Tool	C	<b>220010</b>
Double Stick Tape, for Adhesive Coating	C	<b>807446</b>
¾ in. × 18 Yard Roll (Sold Per Roll, Not Pictured)	-	



# CLV Valve



## Specifications

**Head diameter:** 1.3 in. (33 mm)

**Height:** 0.9 in. (22 mm)

**Material:** Stainless Steel, Delrin

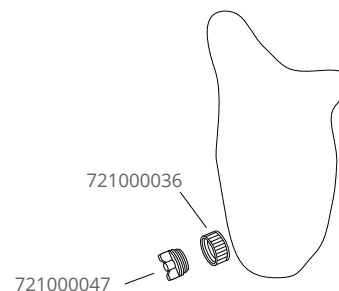
## Product Features

- Specially developed for lamination
- Deep grooves on the valve housing surface for maximum grip



## Ordering Information

Description	Product Number
CLV, complete	<b>721000035</b>
<b>Replacement Parts</b>	
721000036 Housing	
721000047 Insert	



# CTFV – CSF Valve



## Specifications

**Head diameter:** 1.5 in. (39 mm)

**Height:** 0.9 in. (23 mm)

**Material:** Stainless Steel & Delrin

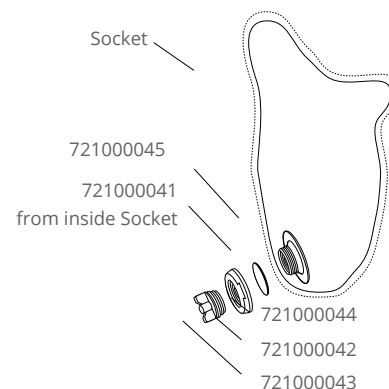
## Product Features

- Designed to be used with thermoplastic sockets
- Allows you to connect the socket to the frame
- Includes a silicone gasket to prevent air leaking into the socket



## Ordering Information

Description	Product Number
CTFV – CSF	<b>721000039</b>
<b>Replacement Parts</b>	
721000041 – Interior valve house	721000044 – Black valve gasket, LTFU
721000042 – Exterior valve house ring	721000045 – Silicone valve gasket for CSF
721000043 – Valve	



# Mini Valve for Vacuum Socket



## Specifications

**Head diameter:** 0.35 in. (9 mm)

**Body diameter:** 0.25 in. (6.5 mm)

**Length:** 0.5 in. (12 mm)

**Material:** Stainless Steel

## Product Features

- Ideal for use with cushion liners and airtight sleeve
- Easy installation
- One-way airflow



## Ordering Information

Description	Product Number
Mini Valve for Vacuum Socket	721000060

# CSS Valve



## Specifications

**Head diameter:** 0.47 in. (12 mm)

**Material:** Aluminium

**Assembly:** 4 mm hex key

## Product Features

- Permits air to exit the socket when amputee stands or walks
- Gives excellent suspension
- Kit includes: CSS Valve Lamination housing and plastic dummy



## Ordering Information

Description	Product Number
CSS Valve	721000090
CSS Valve with Lamination Housing	721000089
Lamination Housing with Plastic Dummy	721000091

# CSS Valve Kit with Pyramid Lamination Adapter



## Specifications

**Valve diameter:** 0.47 in. (12 mm)

**Material:** Aluminium (valve)  
Titanium (pyramid)

## Product Features

- Permits air to exit the socket when amputee stands or walks
- Kit includes: CSS valve Pyramid Lamination Adapter and silicone dummy



## Ordering Information

Description	Product Number
CSS valve with Pyramid Lamination Adapter	<b>731000863</b>
<b>Replacement Parts</b>	
721000090 – CSS Valve	731000861 – Titanium Pyramid lamination adapter
721000095 – Filter for CSS valve pyramid lamination adapter	711000124 – Lamination dummy, silicone